

net[®]



**RIDE
THE
FUTURE**

JOIN THE NET REVOLUTION

We wanted to bring a revolution to the market:
could a saddle be lighter, more comfortable,
more durable, and greener?

More stylish too?

Bicycles can make statements in the urban market,
why shouldn't saddles do it?

Layers of polypropylene mesh and E.V.A. make for an
indestructible and utterly comfortable saddle, while bringing
unique breathability and durability, and weighing 360 g.

The NET saddle is slid together without using glues or toxic
equivalents, thanks to a new robotized process that lowers
the ecological impact of production. NET is 100% recyclable.
The mesh overlay is printable and can be customized,
but also sports some cool urban colour combos
and patterns in the collection.



The thermoplastic honeycomb shell was designed to allow the Ischial bones to move independently and adapt to various riding styles. The E.V.A. padding allows for greater cushioning.



The layers of mesh offer unprecedented ventilation and breathability, aside from major comfort and support.



The polypropylene structure is also incredibly light, bringing the total weight of the saddle to only 360g.



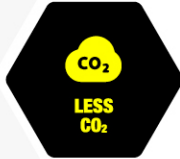
The fibres of the mesh from the polypropylene polymer are virtually indestructible and the E.V.A. retains its cushioning and elastic qualities for a time that is usually longer than the product's very own life cycle. The NET saddle is 100% recyclable and easy to disassemble without using any tools.



The NET saddle is slotted together without using any bonding materials, or other toxic equivalents, all thanks to a new robotized process that lowers the ecological impact of the production.



The structure in polypropylene and mesh make the NET totally waterproof, thus ensuring the best possible performance in all weather conditions.



The whole production is simplified and the process has been able to bring down the level of CO₂ production noticeably. It is also 100% made in Italy, and manufactured in one of the most prestigious sporting production districts in the world.



The NET cover is 50% stronger than any vacuum gel saddle against puncture or rupture damages. At the same time, the overall structure of the saddle is almost indestructible and can withstand any kind of rough use, be it parking in the city or stress due to off-road use.



The NET saddle is made of lightly Lavender scented material, for an experience, which can encompass all senses.

An unmistakable icon whose distinguishing
feature is monochrome. Essential elegance.
Absolute technology that becomes
a style statement.

NET

net[®]



Weight: 360 g



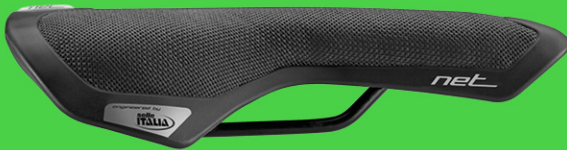
Dimensions: 168x275 cm



Use: all terrain



NET



A powerful and winning camouflage pattern is symbolic of a strong relationship with nature. It's a "combat" style for street fighters who are always ahead of the line.

Camouflage

Camouflage



net[®]



Weight: 360 g **Dimensions:** 168x275 cm **Use:** all terrain

The distinctive look of comic books
mixes art with style, thus becoming
a trend. It's fun, irreverent cheeky,
so that you can always ride with a smile.

COMIC

net[®]



Weight: 360 g **Dimensions:** 168x275 cm **Use:** all terrain



COMIC

The denim's timeless impact is immediately
reminiscent of optimism and youthful enthusiasm.
Love at first sight. Freedom of speech
without giving up style.

JEANS

JEANS



net[®]



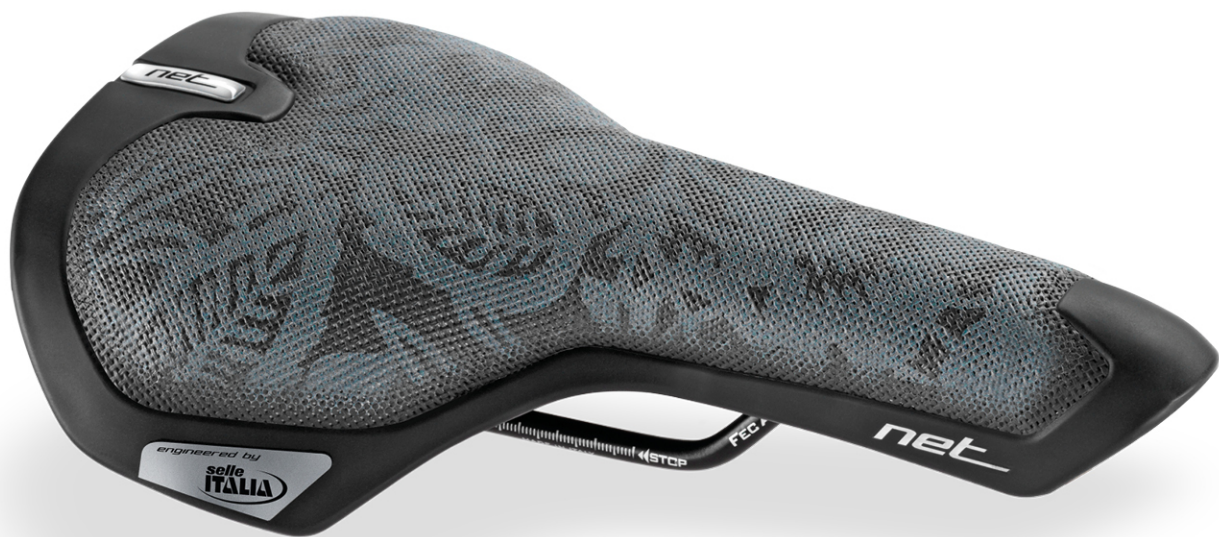
Weight: 360 g **Dimensions:** 168x275 cm **Use:** all terrain

An exquisite design that is evocative
of oriental patterns. A refined print that
can best a touch of class to any bicycle.
Say it discreetly, yet stand out
from the crowd.



FLOWER

net®



Weight: 360 g **Dimensions:** 168x275 cm **Use:** all terrain



FLOWER





CANVAS

CANVAS



net[®]



Weight: 360 g **Dimensions:** 168x275 cm **Use:** all terrain

NOTES

net[®]

netsaddle.com